

**City: SÃO LEOPOLDO – RS – BRAZIL**

**Population: 229.678 inhabitants (2016)**

**Area: 39.5 sq mi**



**Mayor: ARY JOSÉ VANAZZI**

**Secretary of Economic and Technological Development: OLIMAR QUEIROZ**

**Location: The city is located in the metropolitan area;**

**19 mi north from the State Capital, Porto Alegre in Rio Grande do Sul**

*São Leopoldo, Cradle of German colonization in Brasil*

## Contents

1.	WHY SÃO LEOPOLDO?	1
	CONTENTS	2
	WHERE IS SÃO LEOPOLDO LOCATED	3
1.1	BRIEF HISTORY	6
1.2	STATISTIC SUMMARY	6
1.3	AGENDA 2020	7
1.4	UNIVERSITIES	7
1.5	VOCATIONAL SCHOOLS	8
1.6	INDUSTRIAL ZONES	10
1.6.1	INDUSTRIAL DISTRICTS	12
1.6.1.1	SÃO BORJA'S INDUSTRIAL DISTRICT	12
1.6.1.2	MALAGA'S INDUSTRIAL DISTRICT	12
1.6.1.3	VICENTINA INDUSTRIAL ZONE	13
1.6.1.4	NORTHERN ZONE'S INDUSTRIAL DISTRICT	13
1.7	INFRA-STRUCTURE	16
1.8	TRANSPORTATION AND COMMUNICATION ROUTES	17
1.9	TECHNOLOGY PARK	19
1.9.1	CLUSTER OF HEALTH	22
1.10	TRADE	22
1.11	SERVICES	22
1.11.1	HOTELS	23
1.12	BUSINESS INSTITUTIONS	24
1.13	FUTURE	24
	1.13.1 NEW AIRPORT	24
	1.13.2 NEW ROAD ACCESSES TO METROPOLITAN REGION OF PORTO ALEGRE	26
	1.13.2.1 BR-448 EXTENSION PROJECT	27
	1.13.2.2 RS-010	28
	1.13.3 EXPANSION OF TRENSURB	29
	1.13.4 DEGREE IN MEDICINE	29
2.	SOME LOCAL COMPANIES	30
2.1	INDUSTRY	30
2.2	TRADE	32
2.3	SERVICES	33
2.3.1	HOTELS	33
2.3.2	GENERAL	33
2.4	INFORMATION AND COMMUNICATION TECHNOLOGY – ICT	387
3.	EMPLOYERS' ASSOCIATIONS AND TRADE UNIONS	39
3.1	WORKERS' UNIONS	40
3.2	ENVIRONMENTAL INSTITUTIONS	41
4.	CREDITS:	40

## Where is São Leopoldo located?

### State of Rio Grande do Sul



**Figure 1** – The state of Rio Grande do Sul

According to a study of the British Financial Times Group published in April 2014, the State of Rio Grande do Sul is the 9<sup>th</sup> most promising State across the South American continent. In relation to other Brazilian States, it was appointed as the third most promising State, only behind São Paulo and Rio de Janeiro.

The criteria used to compose the research ranking were the economic potential, human capital, cost effective, infrastructure, business-friendly environment and strategy of attracting foreign direct investment.

On the first variable, economic potential, Rio Grande do Sul is the 6<sup>th</sup> among the major South American States.



Figure 2 – Distances from some of the largest cities in South America (from: TECNOSINOS)

## ● VALE DOS SINOS region



- Metropolitan area of Porto Alegre
- Per capita income R\$ 6.800 /year
- Diversified economy, with strong presence of leather and leather goods industry and auto parts.
- Regional strong concentration of higher education entities.



**Figure 3** São Leopoldo is located in the Sinos rivers valley (from: TECNOSINOS)

# 1 WHY SÃO LEOPOLDO?

## 1.1 BRIEF HISTORY

The first big boost in the development of São Leopoldo was at the beginning of the 19<sup>th</sup> century with the arrival of the first German immigrants. Joining the Portuguese and African descendants who worked in the farms, which dominated the local economy until then, the immigrants overcame cultural and logistical barriers, and the lack of resources, turning the region into a significant commercial and productive scenario. This development has been recognized in the State and in the country, which justified the second railway and the second paved roadway of the country, connecting the city to the State capital. Based on this history of overcoming and conquests, São Leopoldo recently received the municipality title of **Cradle of German colonization** in Brazil.

**Currently**, this ethnic mix is well diversified and provides perfect religious and cultural coexistence, with great synergistic effect on the local enterprises.

The results of technical studies of consultancy hired by companies with high standard of quality required have appointed **São Leopoldo among the best locations in the country to install projects in Brazil and Southern Cone.**

Examples:

- HT Micron (Hana Micron) - semicondutores
- Stihl - motorized tools - Factory duplication
- Taurus – transfer unit of arms from POA to SL
- Hyundai Elevators
- Gráfica Palloti (currently Art Laser)– transfer unit from POA to SL
- Accera – software development
- Stephanini – software development
- Device – software development
- SAP - the greatest example is the meticulous and highly technical study commissioned by **SAP**, one of the largest software development company in the world: among dozens of municipalities in the country, São Leopoldo had the highest score of the technical study, which determined the location of SAP's ninth unit of software development in the world and the **first one of the three Americas.**

In addition to these favorable conditions, tax incentive laws have presented effective results in attracting companies to São Leopoldo. Know them by site (attached footer page):

<http://www.saoleopoldo.rs.gov.br/?titulo=Secretarias>

Gabinetes&template=conteudo&categoria=1&codigoCategoria=1&idConteudo=1294&tipoConteudo=INCLUDE\_MOSTRA\_CONTEUDO

## 1.2 STATISTIC SUMMARY

- Total population (2016): 229.678 inhabitants
- Area (2011): 39.5 sq mi
- Demographic density (2013): 2.133,7 inhab/km<sup>2</sup>
- Illiteracy rate of people aged 15 years or more (2010): (3.17 %)
- Life Expectancy at Birth (2010): 76,95 years
- Infant mortality coefficient (2013): 10,03 per thousand live births

- Gdpmp (2014): BRL 6.745.959 (9<sup>th</sup> from state)
- GDP per capita (2014): BRL 29.719,45
- Total exports (2014): USD FOB 394.959.037
- Creation date: Jan 4 th, 1846 - (Law No. 4)

[http://www.fee.tche.br/sitefee/pt/content/resumo/pg\\_municipios\\_detalhe.php?municipio=S%E3o+Leopoldo](http://www.fee.tche.br/sitefee/pt/content/resumo/pg_municipios_detalhe.php?municipio=S%E3o+Leopoldo)

### 1.3 AGENDA 2020

The 2020 agenda is a movement that gathers several sectors of society. Its website, [www.desafiosdascidades.com.br](http://www.desafiosdascidades.com.br), presents the socioeconomic indicators of the 50 greatest municipalities of RS. We can observe in the data available that São Leopoldo is in the High range of Human Development, and that the dimension that has grown the most was Education, followed by Income and Longevity.

### 1.4 UNIVERISTIES

With their religions, immigrants brought their churches, and with them the **schools and universities**.

Currently, within a radius of 62 miles from São Leopoldo, there are more than 200 thousand university students.

### UNISINOS

The city of São Leopoldo counts with the educational institution UNISINOS ([www.unisinos.br](http://www.unisinos.br)), founded and maintained by the Jesuits. Inaugurated 44 years ago, UNISINOS is among the greatest private universities in Brazil, with about 30 thousand students in undergraduate, graduate and extension, in class-room based or distance learning modalities. UNISINOS has graduated about 72 thousand students. The workforce consists of more than 950 professors, of whom 90% are masters, doctors and post-doctors, in addition to approximately 960 employees. UNISINOS has 64 Undergraduate courses, 33 Master's and Doctorate courses, 5 Professional Master's courses, 59 Specialization courses, 35 MBA, MBE and post-MBA courses and 67 Extension courses, with about 310 researches in progress.

**UNISINOS kept for the fourth consecutive time the position of best private college of Brazil**, according to the Brazilian Ministry of Education (MEC), as announced in March 2017. Also won the position of **best private University in South Brazil**, and the **third position in the national ranking**.

Aligned to the concept of National and State systems of Science, Technology and Innovation, the Technology Institutes of UNISINOS reinforce the institution's strategic focus in the provision of services and meeting the needs of Research, Development and Innovation of companies and organizations, besides the formation of highly specialized technical staff.



ITT Performance (<http://www.unisinos.br/itt/>) is an Institute focused on technology and innovation and will act as Accredited Assessment Body of the North American organization Cradle to Cradle Products Innovation Institute. The accreditation turns the Institute into the only Brazilian company empowered to assess organizations, products and services for the certification of the circular production system "from cradle to cradle."

The certification is based on the idea that there is no concept of waste; everything becomes a recycled nutrient for new products. It is installed at the Technology Complex of UNISINOS. (<http://www.unisinos.br/itt/ittperformance/>)

UNISINOS Facts and Figures:

<http://www.unisinos.br/images/institucional/conteudos/fatos-e-numeros-20131.pdf>



### EST

*Faculdades EST* is one of the most important information and research center in Latin America. EST has as general objective to promote the academic formation and to foment the scientific research in the field of the human sciences, applied social sciences, linguistics, letters, arts and health.

*Faculdades EST* is linked to the Sinodal Education Network and identified with the IECLB (Evangelical Church of Lutheran Confession in Brazil). The institution aims at inter-ecclesial, interreligious and intercultural dialogue.

According to MEC - Ministry of Education on 03/08/2017,

EST was the **only one to obtain the maximum score** (IGC 5), among 82 colleges evaluated in Rio Grande do Sul.

<http://www.est.edu.br/conheca-a-est/apresentacao>

FEEVALE is just 6 miles away, in the city of Novo Hamburgo. In Canoas, 12 miles away, there are ULBRA, UNIRITTER and UNILASALLE. In Porto Alegre, there are UFRGS and PUC. In Taquara there is FACAT. In Caxias do Sul, UCS and PUC.

From the elementary school to high school, as well as the wide public network, the town has private institutions with a long tradition, as São José College ([www.saojosesl.com.br](http://www.saojosesl.com.br)), founded by the Franciscan Sisters in 1872, Rio Branco Institute ([www.institutoribranco.org.br](http://www.institutoribranco.org.br)), founded more than 180 years ago, and Colégio Sinodal ([www.sinodal.com.br](http://www.sinodal.com.br)), founded in 1936. The latter two created by the Church of Lutheran Confession in Brazil. Colégio Sinodal won the first place in the ranking of private schools of Rio Grande do Sul in the National Secondary Education Examination (ENEM) in 2013.

### 1.5 VOCATIONAL SCHOOLS

Vocational education is also strong and innovative in the region. In addition to providing large contingent of qualified workforce, the technology centers provide laboratory services and technical guidance.

In the first half of 2017 São Leopoldo receives two Senai Institutes of Innovation linked to FIERGS System. In total, five of these innovation centers will be built in the state of Rio Grande do Sul.

Senai's first innovation institute in RS is the Senai Institute for Innovation in Integrated Mechanical Metal Solutions - ISI-SIM. Therefore, vocational education is offered in an

environment attached to laboratories of applied research, working in association with universities, industries and other local innovation agents. The new building has a built area of 9,000m<sup>2</sup>, with laboratories, workshops, classrooms and support sectors, enabling the development of technical courses in Mechanics, Mechatronics, Electronics, Automation and Work Safety, as well as qualification, initiation and professional development courses.



### INSTITUTO SENAI DE INOVAÇÃO EM SOLUÇÕES INTEGRADAS DE METAL MECÂNICA – ISI-SIM

(ex-Centro Tecnológico De Mecânica De Precisão Senai Plínio Gilberto Kroeff – Cetemp)

Endereço: Av. Getúlio Vargas (BR 116), 3239

Bairro: VICENTINA Cidade: SÃO LEOPOLDO

Estado: RS CEP: 93025-753

Telefone: 51 3904 2690

E-mail: [isi.metalmecanica@senairs.org.br](mailto:isi.metalmecanica@senairs.org.br)

<http://institutosennai.org.br/>

Also operates in São Leopoldo the SENAI Institute for Innovation in Polymer Engineering. It was built with federal resources of the order BR \$ 27 million, of which BR \$ 11 million for the construction of the new building and another BR \$ 16 million for equipment acquisition. In addition to technical consultancies and laboratory tests, projects of applied research are carried out related to the development of new materials, cargoes, additives from renewable sources, polymer based products for application in the areas of oil, gas, naval and civil construction, as well as reuse and recycling waste and after-use products. The ISI-Polímeros represents an upgrade of SENAI / CETEPO - POLYMER TECHNOLOGY CENTER. CETEPO, which is a private, non-profit organization connected to the FIERGS system, was created from the partnership between SIMBORSUL, ACIS-SL, SENAI, São Leopoldo City Hall and IBAMA. The modernization and expansion of the rubber products industries needs are met through the human resource training and provision of technical and technology services specialized in the field of rubber technology and technologies linked to polymers such as plastics, foams and adhesives.



### INSTITUTO SENAI DE INOVAÇÃO EM ENGENHARIA DE POLÍMEROS

(Ex-Centro Tecnológico De Polimeros Senai – CETEPO)

Endereço: AV. PRESIDENTE JOÃO GOULART, 682

Bairro: MORRO DO ESPELHO Cidade: SÃO LEOPOLDO

Estado: RS CEP: 93030-090

Telefone: 51 3904-2700

E-mail: [cetepo@senairs.org.br](mailto:cetepo@senairs.org.br) ou [isi.polimeros@senai.org.br](mailto:isi.polimeros@senai.org.br)

<http://www.cetepo.rs.senai.br>

*Other vocational schools:*

CENTRO DE EDUCAÇÃO PROFISSIONAL SENAI LINDOLFO COLLOR  
Address: AV. THEODOMIRO PORTO DA FONSECA, 706  
District: CENTRO City: SÃO LEOPOLDO  
State: RS ZIP: 93020-080  
Dial Code: +5551 FAX: 3592-3811 Telephone: 3592-3811  
Email: lcollor@senairs.org.br  
<http://www.cursososenai.com.br/senai-sao-leopoldo-cursos-profissionalizantes>

ESCOLA TÉCNICA ESTADUAL FREDERICO GUILHERME SCHMIDT  
(Electrotechnical and Electromechanical courses)  
Rua Bento Gonçalves, 1171.  
District: Centro  
Dial Code: 51 Telephone: Aged 3592-1795  
Email: fgschmidt@uol.com.br  
<http://www.fredericoschmidt.com/>

ESCOLA TÉCNICA ESTADUAL VISCONDE DE SÃO LEOPOLDO  
(Agricultural Technician)  
Av. Feitoria, 3490  
District: Feitoria  
Dial Code: 51 Telephone: 3588-2175; 3566-1272  
Email: escolapolo9@via-rs.net  
<http://eteviscondesl.webnode.com.br>

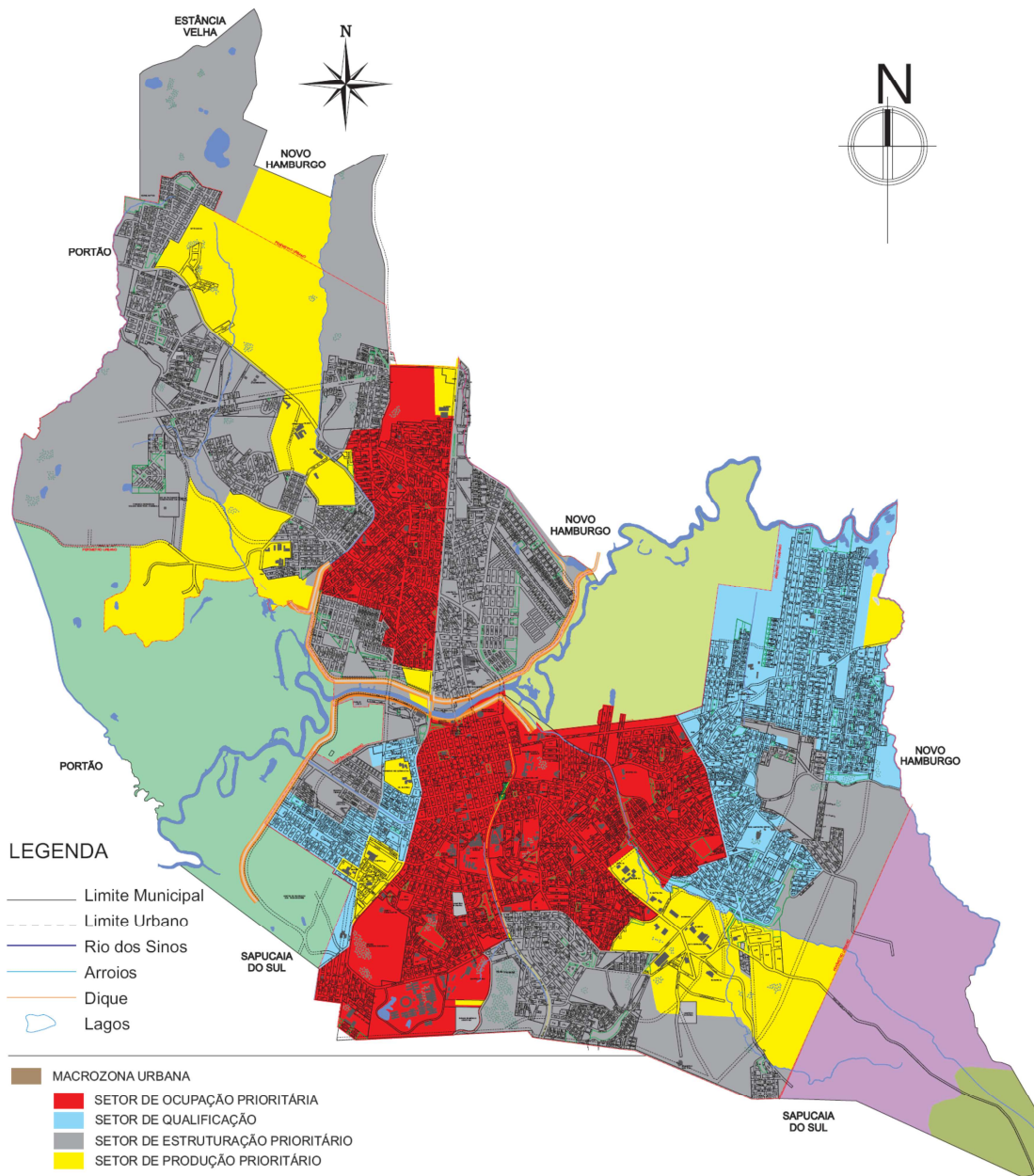
In the region there are also important technology centers, such as Fundação Liberato (<http://www.liberato.com.br/>), four miles from São Leopoldo, in Novo Hamburgo.

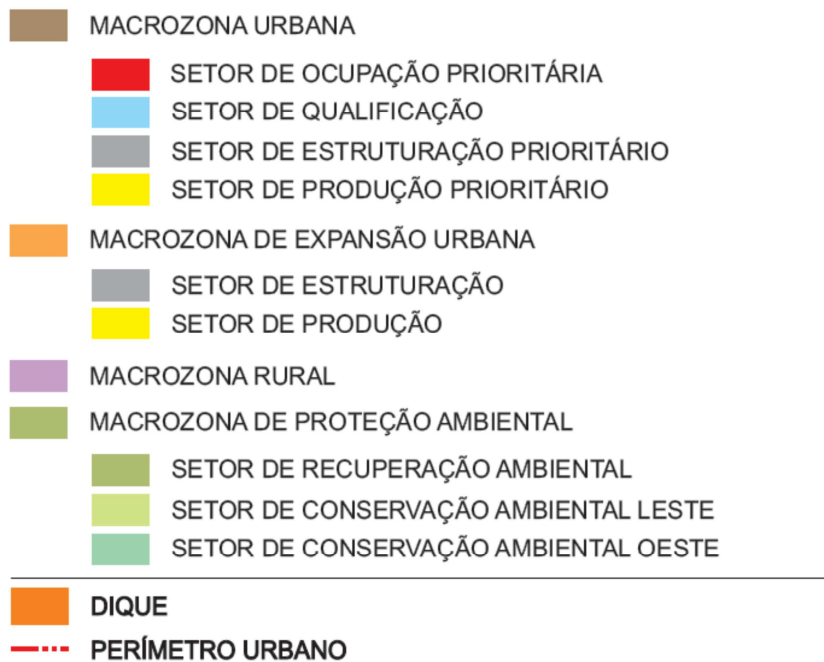
### *1.6 INDUSTRIAL ZONES*

**The City Master Plan**, which was updated in December 2006, considers Priority Production Areas (Industrial Zones) distributed at strategic points of the city. New areas have been added in places near the highways that connect the region to the countryside of the State, to ports and airports, as well as to the Southern and Northern regions of the country. In these locations, the residential use of the soil is vetoed.

Meet the Master Plan at the City Hall website, at Secretarias/Planejamento/Plano Diretor 2006. On the *Sectoring map*, the yellow regions are the “Industrial Zones”. Check the attachment I “Setorização” at:

<http://www.saoleopoldo.rs.gov.br/?template=abreAnexos&arquivo=7291&nomeArquivo=2016 - Anexo 1 - Setorização 2012&categoriaDownload=1>





**Figure 4** Sectoring map – Production (industrial) areas in yellow

São Leopoldo's **Industrial Park** is characterized by diversity.

The greatest strength is in the metal-mechanic industry, with companies of all sizes that produce the most diverse articles, such as: chainsaws, tools, auto parts, weapons, agricultural equipment, hydraulic pumps, furnaces, and household items.

In the municipality, the rubber business also stands out, which produces from rubber soles and footwear components to technical parts for agricultural equipment and automotive industry.

However, there are the most varied industry segments, such as: tanning and leather processing, footwear and components, leather artifacts, plastic artifacts, furniture, upholstery and souvenirs.

Get to know some of our companies through the links from the list on item

[2. SOME LOCAL COMPANIES](#) 30

### 1.6.1 INDUSTRIAL DISTRICTS

#### 1.6.1.1 SÃO BORJA'S INDUSTRIAL DISTRICT

It is the largest and oldest Industrial District of the city, which has approximately 282 ha. It houses large sized companies, such as Stihl, Taurus, Klabin, Copé, Weatherford, Delga and Gráfica Art Laser (ex- Pallotti).

#### 1.6.1.2 MALAGA'S INDUSTRIAL DISTRICT

The Malaga District was developed by a partnership between the São Leopoldo City Hall and 13 companies that have almost completely purchased one of the blocks. The Municipal Secretariat of Economic and Technological Development - SEDETEC - has invested BRL 2.5 million to complete the development of the site.

The allotment has the total area of 40.5 ha and has 38 lots with average area of 6,000 m<sup>2</sup> each.

### 1.6.1.3 VICENTINA'S INDUSTRIAL ZONE

It is one of the oldest ones in the city and has large companies in an area of 37.5 ha.

### 1.6.1.4 NORTHERN ZONE'S INDUSTRIAL DISTRICT

In addition to the existence of many industries installed in the industrial zone at the north of the city, the municipality created an industrial allotment at Arroio da Manteiga neighborhood. The municipal administration provides incentives for the installation of industries in 66 totally urbanized lots. These areas are transferred at cost price through public notices. While industries are being installed, the city hall builds the urban infrastructure (which is 90% concluded), including the sewage treatment station, inaugurated in September 2016.

Among the companies in this industrial district, stands out the industrial complex of **Hyundai Elevators**, which is installed in an area of 8 ha, occupying 32 lots of the *Northern Zone's Industrial District*. Hyundai occupies 19,09 thousand square meters, from which 13,23 are build area.

**Hyundai Elevators** is capable of producing 3 thousands elevator per year. This volume will increase as the market demands.

Currently, the production of Hyundai elevators is also concentrated in other two factories, one of them in the South Korean city of Icheon and the other one in China.

The products that will be manufactured in São Leopoldo (both elevators and, in the future, escalators) will be destined to Brazilian and South America markets. The investments are in the order of US\$ 38 million for the plant plus US\$ 15 million for the testing tower.

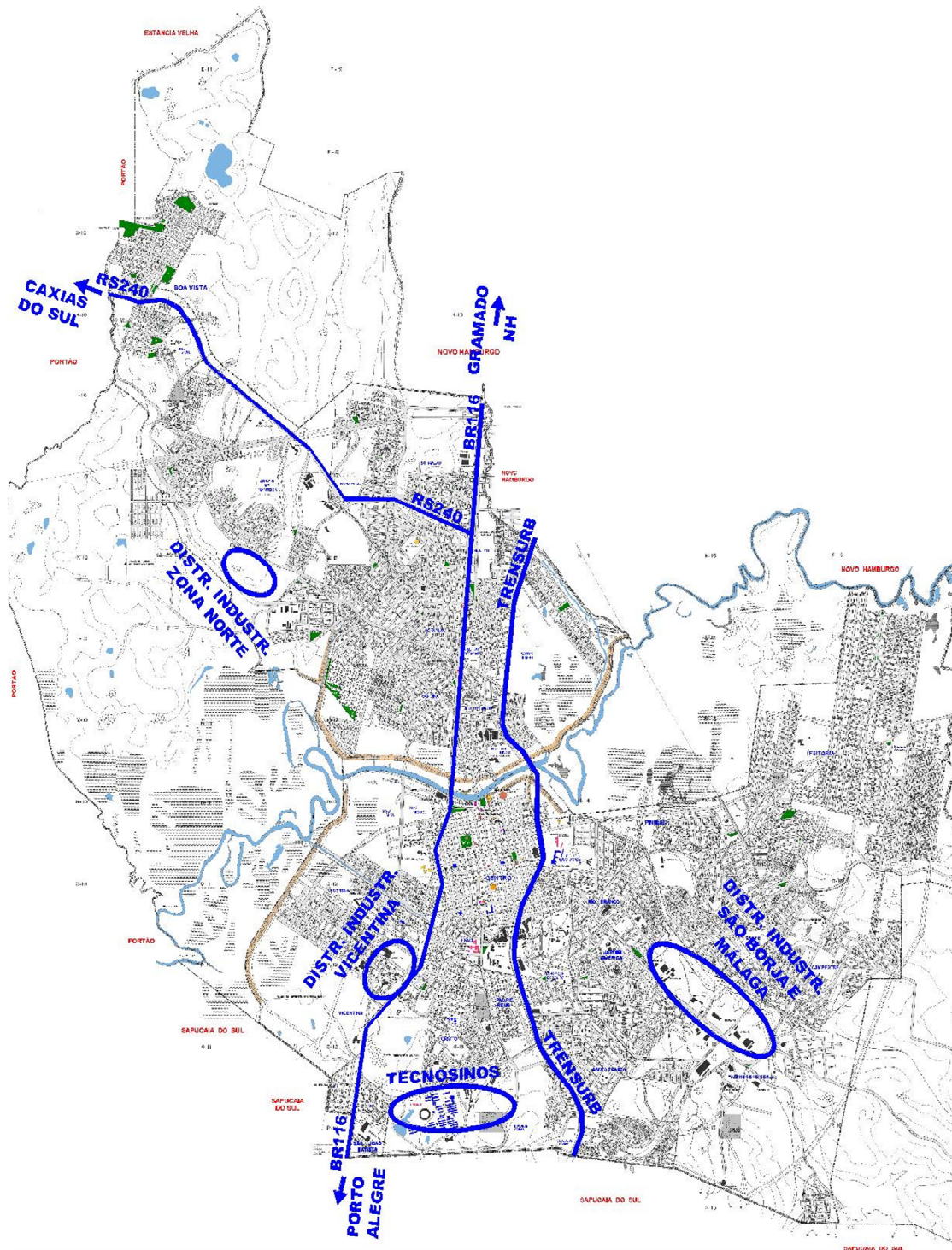
The Hyundai unity in São Leopoldo will have the factory's biggest testing tower in South America (120 meters high), equivalent to a building of 28 to 30 floors. The elevators are tested 24 hours a day.

The PDI demands workforce of the Mechanical Engineering, Electro-Electronic Engineering, Automation Engineering and Information Technology. These areas interact to develop researches on the customization of smart elevators for the Latin American market and the highest possible nationalization index.

The Northern Zone has the largest area of the city for industrial expansion, as shown on the São Leopoldo Master Plan Sectoring Map.



**Figure 5 - NORTHERN ZONE INDUSTRIAL DISTRICT**



**Figure 6 - INDUSTRIAL DISTRICTS LOCATION MAP**

## 1.7 INFRA-STRUCTURE

The city can offer what the industries need the most for a smooth production:

**Electric Energy:** several high-voltage networks that run through the municipality, which has three medium and high voltage sub-stations;

**Water:** all the urban perimeter of the city, including the *Industrial Zones*, is served with treated water;

**Solid Waste:** The Industrial Solid Waste Foundation (FUNRESOLI) (<http://www.funresoli.com.br/>) is an entity of private law, non-profit, created with the purpose of storage and final disposal of industrial waste from companies in the city of São Leopoldo. It is located in an area of 31.5 ha.

**Raw material:** refineries, such as Alberto Pasqualini in Esteio (12 miles), Copesul in Triunfo (28 miles), steel industries, such as Gerdau in Sapucaia (3 miles), rolled steel distributors, and Dalleação (<http://www.dalleaco.com.br/>), in São Leopoldo itself, steel and plastic packaging industries, such as Raft Embalagens (<http://www.raftembalagens.com.br/>), engineering plastics, such as Ensinger (<http://www.ensinger.com.br/>) and so many others in the most diverse sectors provide agility, cost reduction and convenience due to their proximity.

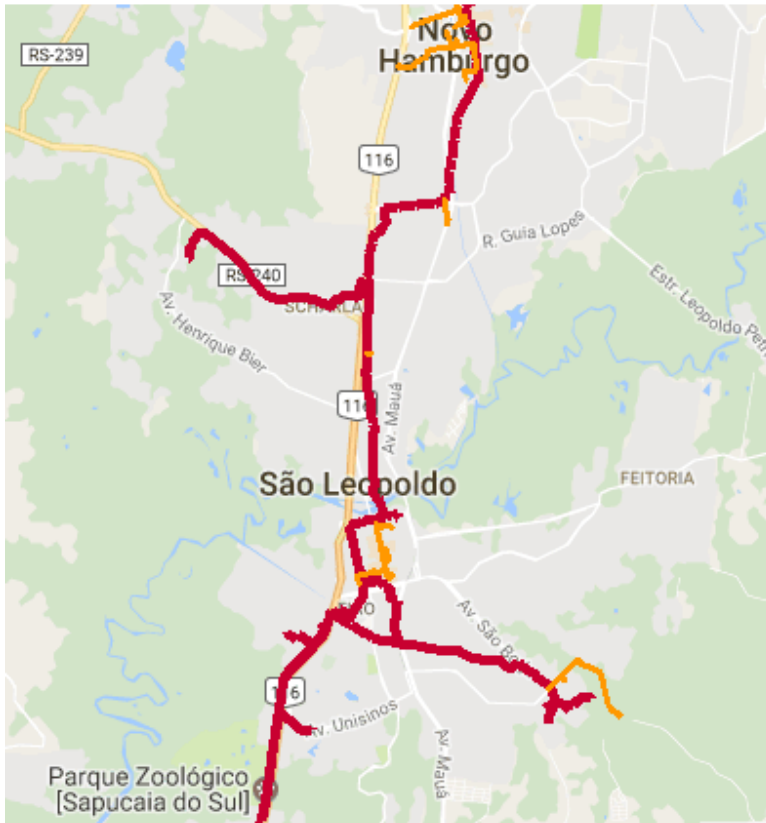
**Services:** there is also wide availability of companies involved in providing services for the industries in the city and the region.

For metallurgical companies, for example: machining, casting, heat treating, cutting, sandblasting and plating.

**Piped Gas:** the municipality, including the *Industrial Zone* of São Borja, natural gas is supplied through the Bolivia-Brazil gas pipeline (Gasbol); <http://www.sulgas.rs.gov.br/sulgas/mapas>

Investments have been made by Sulgás for the expansion of the piped natural gas (NG) network, with the objective of intensifying its use in residential condominiums, commercial places and industrial establishments.

The entire central area (Quadrilateral formed by the tracks: João Correa-São Joaquim-Dom João Becker-Saldanha da Gama) is served by natural gas pipelines, as well as the industrial districts São Borja, Málaga and the Techpark Tecnosinos / Unisinos.



**Figure 7 - NATURAL GAS NETWORK IN SÃO LEOPOLDO**

### *1.8 TRANSPORTATION AND COMMUNICATION ROUTES*

São Leopoldo's location is privileged in relation to the distances because it is relatively equidistant from the main Mercosul centers such as São Paulo, Buenos Aires and Montevideo.

Situated 19 miles from the capital, at the confluence of major roads such as BR-116, BR-448 and RS-240 and near BR-101 and BR-386, São Leopoldo's companies have easy access to Northern and Southern Brazil and to neighboring countries, as well as to Rio Grande **Port**.



**Figure 8 - BR-448 ROUTE**

Salgado Filho International **Airport** is located 17.4 miles from São Leopoldo, with its **Air Cargo Terminal** and daily flights to the major airports of Brazil, South America, Europe and North America.

By **TRENSURB** surface Metro ([www.trensurb.com.br](http://www.trensurb.com.br)), the passenger who boards in São Leopoldo arrives to the airport terminal in 31 minutes, or to Porto Alegre bus station in 39 minutes, or even to the commercial center of the Capital (Mercado Station) in 41 minutes.



**Figure 9** - Free transfers from the train station to the airport by the Aeromovel, designed and manufactured by Coester, based in São Leopoldo. (See more in [www.coester.com.br](http://www.coester.com.br))

To get to the TRAIN, the passenger from neighborhoods that are distant from the station can use the bus lines that are integrated to the train with the same ticket.

The **urban public transportation** is served by four companies that have 38 lines with a fleet of 142 buses, organized by São Leopoldo Operating Consortium (COLEO), which implemented BEM-SL, the Municipal Electronic Ticket with the Contactless Smart Card technology (<http://www.bemsl.com.br/site/obem/index>). In addition to these lines, there are also Metropolitan transportation lines companies that add up to the metro and the urban lines.

### 1.9 TECHNOLOGY PARK

In addition to the "Industrial Zones", São Leopoldo has one of the first Technology Parks in the country. It is strategically situated; part inside UNISINOS campus and part in an area attached to the University. It is regulated by the Master Plan as a *Special Area of Computer Technology Activity Interest*. TECNOSINOS ([www.tecnosinos.com.br](http://www.tecnosinos.com.br)) is built on 34 thousand square meters of a total of 25 hectares of land area. Local companies from ten countries are present: Brazil, Sweden, Germany, Argentina, South Korea, United States, Holland, India, Italy and Mexico. Among the specialties are companies specialized in information technology; communication; digital convergence; semiconductors; automation; functional foods and nutraceuticals, socioenvironmental technologies and energy.

TECNOSINOS became a national reference winning the Best Technology Park of Brazil award in 2010



and 2014, and it got its international recognition in 2011, when its incubator won the second place on the Best Science Based Incubator of 2011 prize.

The Park has currently more than 80 companies in these areas, and adds value by the scientific knowledge in its practical application to the business sector needs.

The sum of the incomes of the Park companies is of around R \$ 2.5 billion / year and generates 7500 jobs.

Tecnosinos is located in the geographical center of an unprecedented technological hub in the country, formalized in 08/25/2016, by the the partnership with the Technological parks: TECNOPUC, Porto Alegre, and TECHPARCH of FEEVALE University from Novo Hamburgo. The three parks together have 250 technology companies and 12,000 professionals.

The companies that compose TECNOSINOS can be visualized in the link below:

<http://www.tecnosinos.com.br/index.php/empresas>

Tecnosinos works with a horizon to 2019 of 300 companies settled with the generation of more than 10,000 value-added jobs.

- ❖ **UNITEC** – Designed with the objective to stimulate the entrepreneurial culture to promote the region's economic strengthening, the Technology Incubator, located at UNISINOS UNITEC Technology Complex, has 30 incubated companies and 15 graduated ones. Acting in the executive management of Tecnosinos as an UNISINOS representative, one of the integral parts in the park governance, UNITEC Technology Complex also has the attraction and implementation of investments among its responsibilities. UNITEC won the 2nd place in the "Best Science Based Incubator of 2011" competition in Auckland, New Zealand. The awards ceremony took place during the 10th Annual Conference of Incubators and Prizes. A total of more than 50 incubators, from 25 countries, competed for the award that is offered by The Technopolicy Network and by the Centre for Strategy and Evaluation Services (CSES) since 2002.

In December 2014, UNITEC received the First Place in Sustainability award and a maximum honor: the Global Best Incubator Award, in the event promoted by the Technopolis Network in the city of Enschede, Holland. Incubators from 27 countries competed. The Award is based on criteria approved for competitive data analysis between incubators, and audited by CSES - Center for Strategic & Evaluation Services, UK.

<http://www.unisinos.br/institucional/estrutura/unitec>

<http://www.tecnosinos.com.br/index.php/infraestrutura/espacos-tecnologicos/incubadora>

#### ❖ **MAGNIFICATIONS**

- **UNITEC 2:** Opened in November 2015, the building, that has two floors and 2.000 square meters, will house up to 37 companies focused on technological innovations. The investment was about R\$ 2.6 millions.



- **UNITEC 3:** Opened in August 24, 2016. It is also a 2-story building and 2,000 square meters to house 20 research and development centers in the nutraceuticals and electronics areas.

- **PARTEC GREEN**

The building, which is currently being built at the Polo de Informática condominium (located at TECNOSINOS), will start its operations in 2018. It will have 11 floors to be occupied by IT companies, with a Total built area of 20,896.24 m<sup>2</sup> and 7,886 m<sup>2</sup> of Private Area, with restaurant, hundreds of covered parking spaces and other amenities. Partec will achieve LEED Certification at the Platinum level (highest level possible). It will be one of the first projects in Rio Grande do Sul to reach such level, and Brazil has less than 10 Platinum-certified buildings at the moment.



**Figure 10** – Partec Green – Virtual maquete

- **INOVA TOWERS:** TECNOSINOS's direction plans the construction of another building in an area of 3 hectares next to the Technology Park, purchased by local investors. It refers to a 30-story building for new enterprises to lease in the Park. It will be the first of a set of six towers in 15 years.

- ❖ **HT MICRON**

In June 2014, HT Micron, the most modern encapsulation / testing factory and the biggest *clean room* in Latin America, was inaugurated at TECNOSINOS, in São Leopoldo. Built in accordance to rigid world standards, it has a structure of

approximately 10 thousand square meters. Most of this area is destined for production, consisting of clear rooms. With 340 employees and an investment of BRL 50 million until the inauguration and forecast of BRL 200 million by 2019, HT Micron has the largest clear room in Latin America, 7.5 thousand square meters, producing NAND Flash, SIP, Smart Card and DRAM memory. These products are used in high memory flash drives, cell phones, tablets, high-speed memory for desktops, notebooks and ultrabooks. The company integrates the value chain of some electronics companies such as SKY, Hynix, Micron and Toshiba. Through the joint venture between South Korean Hana Micron and Parit Participações em Inovação e Tecnologia S/A Group, it has easy access to the most modern technologies related to encapsulation products and processes.

([www.htmicron.com.br](http://www.htmicron.com.br))

#### 1.9.1 CLUSTER OF HEALTH (*ClusteRSaúde*)

São Leopoldo has active participation in working groups, which integrate actions to create in the state a cluster in health area.

This movement was born in the city, from the effort of the Municipal Administration and UNISINOS to host a franchise Medical Valley, from Germany.

The working groups are composed by laboratories, hospitals, universities, the health sector companies, development banks, public managers, drugs factories and other companies from health sectors.

In addition to participating in these works, the municipality has participated with UNISINOS in missions to national and international fairs, including the Medical Valey in Erlangen, Germany, to seek investment and technologies in healthcare.

#### 1.10 TRADE

The trade diversity and quality in São Leopoldo serves the town and attracts customers to the region.

In addition to a mall that offers the best in comfort and safety, with even five modern movie theater rooms, there is also the traditional "Rua Grande" in São Leopoldo. Independência Street is a true open air mall that has over 0,6 miles of varied trade, where establishments from national networks coexist with other ones that are traditional in the city.

The most populous neighborhoods have a life of their own, turning themselves into real *neighborhood-cities*, such as Scharlau, Feitoria and São Borja.

#### 1.11 SERVICES

Even though the proximity to the State capital represents a great facilitator, São Leopoldo has self-sufficiency and sustainability in all services, from the simpler ones for people's everyday life, to the most complex ones for large companies. São Leopoldo has today 9,500 active service provider companies.

The urban public transportation is served by four companies that serve every neighborhood of the city and are integrated with *TRENSURB* (Surface Metro), which connects the city to the airport and the capital's downtown.



Cargo transportation companies choose São Leopoldo due to its privileged logistics, benefiting from the strategic location of the city with regard to major highways leading to the State countryside, the rest of the country and Mercosul countries.

For the same reason São Leopoldo bus station is an important regional convergence point.

São Leopoldo has extensive banking network, with branches and offices with ATMs downtown, in the neighborhoods and at the University.

Registries and postal service are also complete, modern and decentralized.

### 1.11.1 HOTELS

New and comfortable hotels add value to the hotel chain of São Leopoldo and region, with the contribution of the benefits of Law 7945/2013. This law authorizes the executive branch to provide broad incentives for deploying high standard lodging facilities in the city.

See more about the law in:

<http://www.saoleopoldo.rs.gov.br/?template=abreAnexos&arquivo=6614&nomeArquivo=L EI Incentivo HOTEIS Alto Padrão&categoriaDownload=9>.



Figure11 – new hotels

### 1.12 BUSINESS INSTITUTIONS

The city has strong business leadership motivated by the dynamics and strength of its actors.

ACIST - Comercial, Industrial, Services and Technology Association, actively brings together large and small entrepreneurs in its headquarters at Industries Center, where some of the main employers' unions of the municipality and the region are also set out.



Feitoria neighborhood assembles its business leaders at ASSEMBLIFE, Feitoria's Entrepreneurs and Liberal Professionals Association.

The commercial sector of the city has CDL - Shopkeepers Director Chamber, and SINDILOJAS – Retail Sellers Union.

The offices located in São Leopoldo, the five "S"s, contribute to institutions and enterprises performance. They are: SEBRAE, SENAI, SENAC, SESI and SESC.

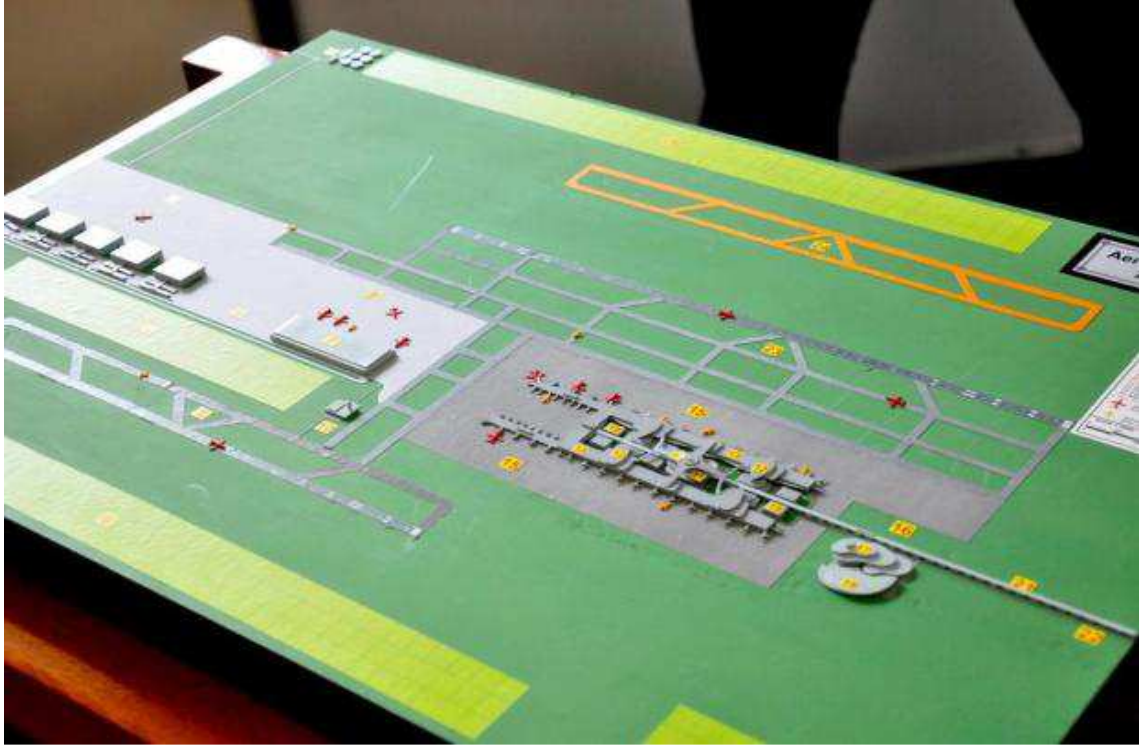
### 1.13 FUTURE

#### 1.13.1 NEW AIRPORT

In September 2013 the Government of Rio Grande do Sul confirmed the location where the 20 de Setembro Airport should be built in: a 2.1 million hectares area in the municipality of Portão, about 31 miles from Porto Alegre.

With the definition of the enterprise location, the Government can initiate the next steps of the project, among them the financial modeling.

The 20 de Setembro Airport project foresees the construction of two new roads, allowing simultaneous takeoffs and landings and a passenger terminal. The airport area – about five times greater than the one in Porto Alegre's Salgado Filho – will enable the expansion of the number of lanes in the future.



**Figure12 - NEW AIRPORT SCALE MODEL**



Figure 13 - NEW AIRPORT LOCATION

### 1.13.2 NEW ROAD ACCESSES TO THE METROPOLITAN REGION OF PORTO ALEGRE

#### 1.13.2.1 BR-448 EXTENSION PROJECT

BR-448 (Rodovia do Parque) extension to RS-240, in Portão, will receive federal resources, since its route was included in the federal government programs. The work embraces Rodovia da Serra and goes up to ERS-239 and BR-116 crossroad in Estância Velha. The total length is 20 miles, budgeted at BRL 530 million.

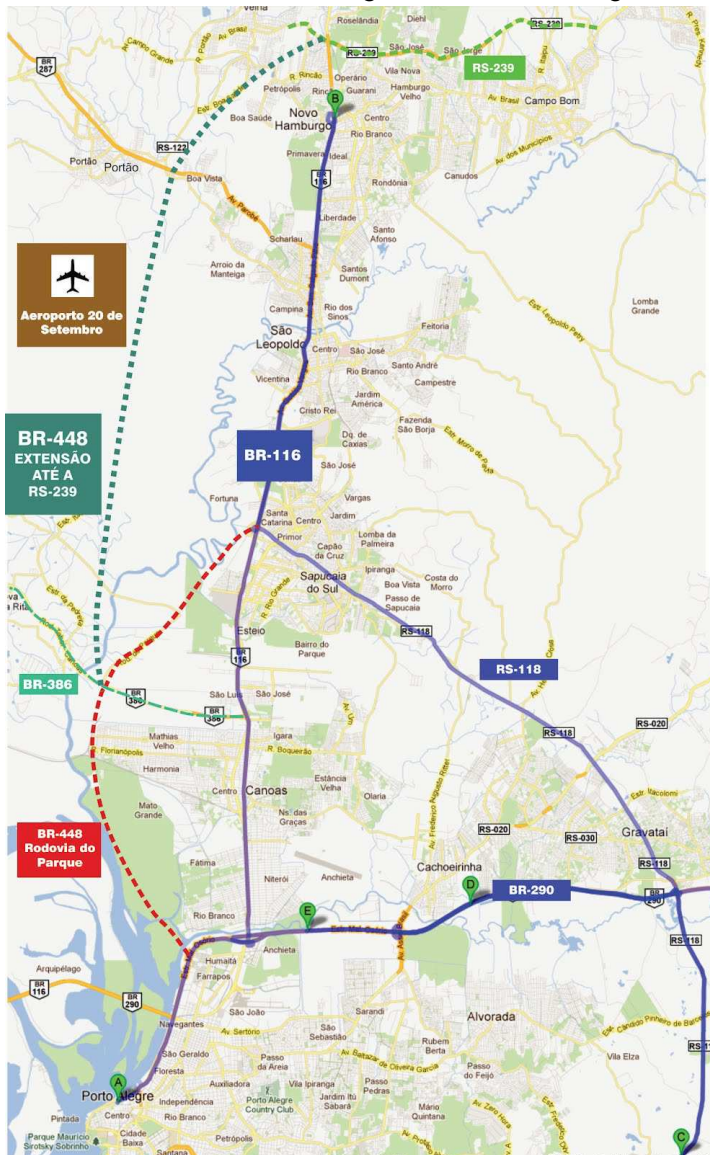


Figure 14 - BR-448 TO ERS-239 EXTENSION

### 1.13.2.2 RS-010

RS-010 was designed to connect Cachoeirinha and Sapiiranga, through a public-private partnership. Measuring 60 miles, with municipal accesses and links between highways and viaducts, the estimated cost of the works is BRL 1.5 billion. It will connect RS-239 (Campo Bom/Sapiiranga) to BR-290 (Assis Brasil/Cachoeirinha) with estimated speed of 62 mi/h and with 2 lanes on each side. It will be the East Branch of the Metropolitan Ring.



Figure 15 - RS-010

### 1.13.3 EXPANSION OF TRENSURB

The expansion of TRENSURB to Novo Hamburgo was recently inaugurated, and the studies for the metro expansion to the municipality of Sapiranga have already started. Oficina Engenheiros Consultores Associados company was chosen to do the technical feasibility study, through a competition for BRL1,49 million in 2012.



**Figure 16 - PORTO ALEGRE TO NOVO HAMBURGO TRENSURB LINE**

### 1.13.4 DEGREE IN MEDICINE

In November 2013 São Leopoldo has been pre-selected by Ministry of Education – MEC - to install the medicine undergraduation program. Medicine will be the ninth undergraduate program at the University's Health School, which offers Nursing, Nutrition, Psychology, Physiotherapy, Biomedicine, Pharmaceutics, Physical Education and Gastronomy, in addition to having four graduate programs.

## 2. SOME LOCAL COMPANIES

### 2.1 INDUSTRY

METAL-MECHANIC		
COMPANY	SITE	MAIN PRODUCTS
BEMAQ	<a href="mailto:bemaq@brturbo.com">bemaq@brturbo.com</a>	Metal structures
BESSEY	<a href="mailto:ind@bessey.com.br">ind@bessey.com.br</a>	Cold drawn steels/rectified
BIEHL	<a href="http://www.biehl.com.br">www.biehl.com.br</a>	Hardware and tools
BIOMAX	<a href="http://www.biomaxind.com.br">www.biomaxind.com.br</a>	Machines
CAIXAS D'AGUA CRIS	<a href="http://www.caixasdeaguacris.com.br">www.caixasdeaguacris.com.br</a>	Tanks and metallic water tanks
CALTECNICA	<a href="http://www.caltecnica.com.br">www.caltecnica.com.br</a>	Boilerwork, oxyfuel and machining
COESTER	<a href="http://www.coester.com.br/us/empresa">www.coester.com.br/us/empresa</a>	Electric Actuators and Gearboxes; Connectors For Industrial Networks; Automation in Urban Mobility
CONTROIL	<a href="http://www.controil.com.br">www.controil.com.br</a>	Auto Parts
CONTROIL	<a href="http://www.controil.com.br">www.controil.com.br</a>	Hydraulic brakes
CORTIAÇO	<a href="http://www.cortiacoco.com.br">www.cortiacoco.com.br</a>	Oxyfuel, welding, machining
DALLEAÇO	<a href="http://www.dalleaco.com.br">www.dalleaco.com.br</a>	Flat steel
DELGA	<a href="http://www.maquinaspiratininga.com.br">www.maquinaspiratininga.com.br</a>	Stamped parts
FMS	<a href="http://www.fmsferramentas.com.br">www.fmsferramentas.com.br</a>	Tools
GEDORE	<a href="http://www.gedore.com.br">www.gedore.com.br</a>	Tools
GIANNI	<a href="http://www.gianni.com.br">www.gianni.com.br</a>	Articles for irrigation and pumping
GREFORTEC	<a href="http://www.grefortec.com.br">www.grefortec.com.br</a>	Furnaces and thermal equipment
GRUPO DELGA	<a href="http://www.grupodelga.com.br">www.grupodelga.com.br</a>	Automotive sector
GRUPO METAL SERVICE	<a href="http://www.grupometalservicers.com.br">www.grupometalservicers.com.br</a>	Cut and fold, injected, machining, boilermaking.
H.DORF	<a href="http://www.hdorf.com.br">www.hdorf.com.br</a>	Machining solutions
HIGRA	<a href="http://www.higra.com.br">www.higra.com.br</a>	Amphibious pumps, aerators
METAL WORK	<a href="http://www.dover.com.br/">www.dover.com.br/</a>	Parts for industrial automation
METALPOX	<a href="http://www.metalpox.com.br">www.metalpox.com.br</a>	Furniture for libraries
METALSUL	<a href="http://www.metalsulsl.com.br">www.metalsulsl.com.br</a>	Plates
METALURGICA FLOCAR	<a href="http://www.flocar.com.br">www.flocar.com.br</a>	Keyrings, buckles, rings.
METALURGICA NUNES	<a href="http://www.metalurgicanunes.com.br">www.metalurgicanunes.com.br</a>	Precision machining
PECK	<a href="http://www.peck.ind.br">www.peck.ind.br</a>	Razors and industrial tools
RAFT	<a href="http://www.raftembalagens.com.br">www.raftembalagens.com.br</a>	Industrial packaging
SAURER	<a href="http://www.saurer.com.br/">www.saurer.com.br/</a>	Industrial machines
SEBRAS	<a href="http://www.sebras.com.br">www.sebras.com.br</a>	Fast doors
STIHL	<a href="http://www.stihl.com.br">www.stihl.com.br</a>	Chainsaws, DIY
TAURUS	<a href="http://www.taurus.com.br">www.taurus.com.br</a>	Tools, auto parts
TÉCSINOS	<a href="http://www.tecsinos.ind.br">www.tecsinos.ind.br</a>	Matrix
USIMATOS	<a href="http://www.usimatos.com.br">www.usimatos.com.br</a>	Precision machining

USITORK	<a href="http://www.usitork.com.br">www.usitork.com.br</a>	Machining Division
VALGE	<a href="http://www.vgeremia.com.br">www.vgeremia.com.br</a>	Parts for oil industry
WEATHERFORD	<a href="http://www.weatherford.com">www.weatherford.com</a>	Hydraulic pumps

<b>LEATHER-TANNERIES</b>		
<b>COMPANY</b>	<b>SITE</b>	<b>MAIN PRODUCTS</b>
BOLZANO	<a href="http://bolzanobrasil.com/">http://bolzanobrasil.com/</a>	Retaining and finishing
LUIZ FUGA	<a href="http://www.luizfuga.com.br">www.luizfuga.com.br</a>	Leather for clothing and upholstery

<b>LEATHER-ARTIFACTS</b>		
<b>COMPANY</b>	<b>SITE</b>	<b>MAIN PRODUCTS</b>
ARENNA - MACOR	<a href="http://www.arennacouros.com.br/">www.arennacouros.com.br/</a>	Travel articles and folders
BENNEMANN	<a href="http://www.bennemann.com.br">www.bennemann.com.br</a>	Travel articles and folders
EXPOPELLE	<a href="http://www.expopelly.com.br">www.expopelly.com.br</a>	Travel articles and folders
GUEDES	<a href="http://www.gueds.com.br">www.gueds.com.br</a>	Travel articles and folders
INDUARTE	<a href="http://www.induarte.com.br">www.induarte.com.br</a>	Leather articles and artifacts
MISTIKE	<a href="http://www.bolsasmistike.com.br">www.bolsasmistike.com.br</a>	Handbags

<b>FOOTWEAR AND COMPONENTS</b>		
<b>COMPANY</b>	<b>SITE</b>	<b>MAIN PRODUCTS</b>
FORMAX	<a href="http://www.formax.com.br">www.formax.com.br</a>	Stiffeners, insoles, cuirass
POLIFORM	<a href="http://www.poliformbrasil.com.br">www.poliformbrasil.com.br</a>	Platforms and heels
FORMATEK	<a href="http://www.formtek.com.br">www.formtek.com.br</a>	Components for footwear

<b>APPAREL</b>		
<b>COMPANY</b>	<b>SITE</b>	<b>MAIN PRODUCTS</b>
DRESCH SPORT	<a href="http://www.dreschsport.com.br">www.dreschsport.com.br</a>	Sporting goods, uniforms

<b>RUBBER</b>		
<b>COMPANY</b>	<b>SITE</b>	<b>MAIN PRODUCTS</b>
BELTON	<a href="http://www.belton.com.br">www.belton.com.br</a>	Pneumatic automation, valves
BINS S.A.	<a href="http://www.bins.com.br">www.bins.com.br</a>	Technical parts, auto parts
CREPESUL	<a href="http://www.crepesul.com.br">www.crepesul.com.br</a>	Technical parts, auto parts
MERCOBOR	<a href="http://www.mercobor.com.br">www.mercobor.com.br</a>	Technical parts, auto parts
MONIL	<a href="mailto:monilborrachas@terra.com.br">monilborrachas@terra.com.br</a>	Artifacts
REFORMAQUINAS	<a href="http://www.reformarquinas.com.br">www.reformarquinas.com.br</a>	Equipment for rubber
SUL CROMO	<a href="http://www.sulcromo.com.br">www.sulcromo.com.br</a>	Metallization and hard chrome plating
TECSINOS	<a href="http://www.tecsinos.ind.br">www.tecsinos.ind.br</a>	Technical parts, footwear industry
TIPLER	<a href="http://www.tipler.com.br">www.tipler.com.br</a>	Artifacts

<b>PAPER</b>		
<b>COMPANY</b>	<b>SITE</b>	<b>MAIN PRODUCTS</b>
KLABIN	<a href="http://www.klabin.com.br">www.klabin.com.br</a>	Corrugated packaging

<b>CHEMISTRY</b>		
<b>COMPANY</b>	<b>SITE</b>	<b>MAIN PRODUCTS</b>
INTERQUÍMICA	<a href="http://www.interquimica.com.br">www.interquimica.com.br</a>	Ingredients for rubbers, inks
SABÃO IMPERIAL	<a href="http://www.sabaoimperial.com.br">www.sabaoimperial.com.br</a>	Soaps
ZSCHIMMER&SCHWARZ	<a href="http://www.zschimmer-schwarz.com.br">www.zschimmer-schwarz.com.br</a>	Shampoos, creams

<b>PLASTICS-ARTIFACTS</b>		
<b>COMPANY</b>	<b>SITE</b>	<b>MAIN PRODUCTS</b>
CORDOARIA SLEOPOLDO	<a href="http://www.csl.com.br">www.csl.com.br</a>	Nautical cables and ropes
CR PLASTIC	<a href="http://www.crplastic.com.br">www.crplastic.com.br</a>	Injection and industrial screen printing
LUPATECH	<a href="http://www.lupatech.com.br">www.lupatech.com.br</a>	Nautical cables
PETROLL	<a href="http://www.petroll.com.br">www.petroll.com.br</a>	Plastic frames
POLIFORM	<a href="http://www.poliformbrasil.com.br">www.poliformbrasil.com.br</a>	Plastic-polyurethane artifacts
ROTOTECH	<a href="http://www.rototech.com.br">www.rototech.com.br</a>	Rotational molding technique
SEFLY	<a href="mailto:sefly@sinos.net">sefly@sinos.net</a>	

<b>CEMENT-ARTIFACTS</b>		
<b>COMPANY</b>	<b>SITE</b>	<b>MAIN PRODUCTS</b>
AM SILVA	<a href="http://www.amsilvaartefatosdecimento.com.br">www.amsilvaartefatosdecimento.com.br</a>	Cement artifacts
CONSTRUSINOS	<a href="http://www.construsinos.com.br">www.construsinos.com.br</a>	Tubes, galleries, curbs
GRENAL	<a href="mailto:vendas@grenal.artefatos.com.br">vendas@grenal.artefatos.com.br</a>	Cement artifacts
LAJESINOS	<a href="http://www.lajesinos.com.br">www.lajesinos.com.br</a>	Systems e structures

<b>FOOD AND DRINKS</b>		
<b>COMPANY</b>	<b>SITE</b>	<b>MAIN PRODUCTS</b>
ALISUL	<a href="http://www.alisul.com.br">www.alisul.com.br</a>	Animal feed
GUARÁ	<a href="http://www.vilk.com.br">www.vilk.com.br</a>	Animal feeding

<b>OTHER</b>		
<b>COMPANY</b>	<b>SITE</b>	<b>MAIN PRODUCTS</b>
DEUTSCHSUL ECOWOOD LTDA	<a href="http://www.deutschsul.com.br">www.deutschsul.com.br</a>	Decks and ecological wooden furniture.
FOR SERVICE	<a href="http://www.forservicers.com.br">www.forservicers.com.br</a>	Industrial furnaces
HIDRAUJET	<a href="http://www.hidraujet.com.br">www.hidraujet.com.br</a>	Machines
USINA PAVANI	<a href="http://www.usinapavani.com.br">www.usinapavani.com.br</a>	Collections and recycling

## 2.2 TRADE

### SHOPPING MALL

- Bourbon-Zaffari:  
[http://www.bourbonshopping.com.br/site/busca\\_lista.jsp?shopping=sao-leopoldo](http://www.bourbonshopping.com.br/site/busca_lista.jsp?shopping=sao-leopoldo)
- MakroAtacadista: <http://www.makro.com.br/SitePages/lojas.aspx?Filter=li>
- Supermarkets: BIG, ZAFARI, NACIONAL, RISSUL, MAXXIATACADO.
- BR Suply [www.brsupply.com.br](http://www.brsupply.com.br)
- Leroy Merlin: <http://www.leroymerlin.com.br/loja/loja-sao-leopoldo-rs>
- Car dealerships: FORD, GM, KIA, FIAT, JAC, RENAUT.
- Dealers of trucks: VOLKSWAGEN.

## 2.3 SERVICES

### 2.3.1 HOTELS

NAME	LOCALIZATION
Klein Ville	Downtown
Work Hotel	In front of UNISINOS
Inter City (em obras)	Downtown
Hotel Dez	BR-116 road

### 2.3.2 GENERAL

GENERAL		
COMPANY	SITE	MAIN PRODUCTS
AGOSTINI	<a href="http://www.aggostini.com.br">www.aggostini.com.br</a>	Hydraulic Installation
AIL	<a href="http://www.ail.com.br">www.ail.com.br</a>	Logistics service
ALC TEXTURAS	<a href="http://www.alctexturas.com.br">www.alctexturas.com.br</a>	Molds engraving in general
ART E ARQ DESIGN	<a href="http://www.artearq.com.br">www.artearq.com.br</a>	Visual communication
ART VIRTUAL	<a href="http://www.artevirtualrs.com.br">www.artevirtualrs.com.br</a>	Visual communication
AUTOLOCADORA ELIAMAR	<a href="http://www.eliamar.com.br">www.eliamar.com.br</a>	Car rental
AUTOSHOPPING	<a href="http://www.autoshoppingsinos.com.br">www.autoshoppingsinos.com.br</a>	Car sales
BALSEMÃO	<a href="http://www.balsemao.com.br">www.balsemao.com.br</a>	Leather, paper and synthetic engraving.
BERLINER LUFT	<a href="http://www.berlinerluft.com.br">www.berlinerluft.com.br</a>	Air ducts
BORDIGNON ECO DESIGN	<a href="http://www.romarbordignon.blogspot.com">www.romarbordignon.blogspot.com</a>	Custom made ecological furniture
BRASPARK	<a href="http://www.braspark.com.br">www.braspark.com.br</a>	Access control solutions
CARTORIO CASELLAN	<a href="http://www.cartoriocastellan.com.br">www.cartoriocastellan.com.br</a>	Registry
CASA DO CAMPING	<a href="http://www.casadocamping.com.br">www.casadocamping.com.br</a>	Manufacturing and reforms of trailers
CELSHOP	<a href="http://www.celshop.com.br">www.celshop.com.br</a>	Informatics
CIA DAS ESPUMAS	<a href="http://www.ciadasespumas.net">www.ciadasespumas.net</a>	Foam in blocks and blades
DALEY BORTOLON	<a href="http://www.daleybortolon.com.br">www.daleybortolon.com.br</a>	Language schools

DANIEL FARRIA-CORRÊA	<a href="http://www.fariacorreia.com.br">www.fariacorreia.com.br</a>	Lawyer
DIMENLAB	<a href="http://www.dimenlab.com.br">www.dimenlab.com.br</a>	Metrology Laboratory
DRESCH SPORT	<a href="http://www.dreschsport.com.br">www.dreschsport.com.br</a>	Sporting goods
ELITE	<a href="http://www.eliteinstalacoes.com.br">www.eliteinstalacoes.com.br</a>	Security equipment
ESTRUTURAL	<a href="http://www.estrutural.com.br">www.estrutural.com.br</a>	Mounts and ventures
FLAMINGO	<a href="http://www.sistemaflamingo.com.br">www.sistemaflamingo.com.br</a>	Hygiene systems
FRONTEC	<a href="http://www.frontec.com.br">www.frontec.com.br</a>	Attachment and isolation
GEDORE	<a href="http://www.gedore.com.br">www.gedore.com.br</a>	Professional tools
GINÁSIO CENTRAL	<a href="http://www.ginasiocentral.com.br">www.ginasiocentral.com.br</a>	Sports School, parties and events
GPRSAT	<a href="http://www.gprsat.com.br">www.gprsat.com.br</a>	Satellite tracking
GRUPO VILELA LEITE	<a href="http://www.vilelaleite.com.br">www.vilelaleite.com.br</a>	Business space
HEXPO	<a href="http://www.hexpo.com.br">www.hexpo.com.br</a>	Promotional architecture
HEXUS FOOD	<a href="http://www.hexusfoods.com.br">www.hexusfoods.com.br</a>	Ingredients for the food industry.
HIGRA	<a href="http://www.higra.com.br">www.higra.com.br</a>	Amphibious pumps and aerators
INGABOR	<a href="http://www.ingabor.com.br">www.ingabor.com.br</a>	Rubber parts
INTERCON	<a href="http://www.intercontrading.com.br">www.intercontrading.com.br</a>	International trade of raw materials
LCS	<a href="http://www.lcsinformatica.com.br">www.lcsinformatica.com.br</a>	Informatics
LEGNO DEL BRASILE	<a href="http://www.legnodelbrasile.com.br">www.legnodelbrasile.com.br</a>	Construction and design
LÓC	<a href="http://www.locloucaseventos.com.br">www.locloucaseventos.com.br</a>	Rent of tableware and objects
MERCATTO	<a href="http://www.mercattomoveis.com.br">www.mercattomoveis.com.br</a>	Custom made furniture
MICRO DEZ	<a href="http://www.microdez.com.br">www.microdez.com.br</a>	Marketing and commercial
MULTIMOLDES	<a href="http://www.multimoldes.com.br">www.multimoldes.com.br</a>	Aluminum molds, plastic
NUTRA	<a href="http://www.nutrarefeicoes.com.br">www.nutrarefeicoes.com.br</a>	Collective meals
NUTRITECNICA	<a href="http://www.nutritecnica.com.br">www.nutritecnica.com.br</a>	Collective feeding, clinic
PERFFIL	<a href="http://www.perffilcoop.com.br">www.perffilcoop.com.br</a>	Third party services
PROJETARE	<a href="http://www.projetaremoveis.com">www.projetaremoveis.com</a>	Custom made furniture
REAL ATACADO	<a href="http://www.realatacado.com.br">www.realatacado.com.br</a>	Bazar, housewares
REGIS ANTONIO	<a href="http://www.regisantonio.com.br">www.regisantonio.com.br</a>	Sustainable development
ROTA SISTEMAS	<a href="http://www.rotasistemaseservicos.com.br">www.rotasistemaseservicos.com.br</a>	Alarm systems and monitoring
ROTH VEÍCULOS	<a href="http://www.autocarro.com.br">www.autocarro.com.br</a>	Car sales
S SANTANNA	<a href="http://www.ssantannatransportes.com.br">www.ssantannatransportes.com.br</a>	Cargo transport in general
SEMAE	<a href="http://www.semae.rs.gov.br">www.semae.rs.gov.br</a>	Water and sewer
SERVTEL	<a href="http://www.viabilize.com.br">www.viabilize.com.br</a>	Telecommunications, telephone exchanges.
SPOLIER	<a href="http://www.spolier.com.br">www.spolier.com.br</a>	Cargo transport in general
SUPREMA	<a href="http://www.supremaexpress.com.br">www.supremaexpress.com.br</a>	Espresso ice cream machine
TIMETRADE	<a href="http://www.timetradelog.com.br">www.timetradelog.com.br</a>	International air freight
TOLDOS SIWINSKI	<a href="http://www.toldossiwiniski.com.br">www.toldossiwiniski.com.br</a>	Rental of awnings
TOP SERVICE	<a href="http://www.topservice.com.br">www.topservice.com.br</a>	Full service: industry, commercial
TRUCK SINOS	<a href="http://www.trucksinos.com.br">www.trucksinos.com.br</a>	Brakes, suspension, valves
UNIDASUL	<a href="http://www.unidasul.com.br">www.unidasul.com.br</a>	Food distributor

VISO NET	<a href="http://www.visonet.net">www.visonet.net</a>	Services in foreign trade
----------	--	---------------------------

<b>METAL-MECHANIC</b>		
<b>COMPANY</b>	<b>SITE</b>	<b>MAIN PRODUCTS</b>
AUDY METALÚRGICA LTDA	<a href="mailto:audymetalurgica@gmail.com">audymetalurgica@gmail.com</a>	Turn, mill and maintenance
BODYCOTE	<a href="http://www.bodycote.com">www.bodycote.com</a>	Metal thermal treatment
DI METALIS	<a href="http://www.dimetalis.com.br">www.dimetalis.com.br</a>	Treatment and restoration of metals
DIMENLAB	<a href="http://www.dimenlab.com.br/">www.dimenlab.com.br/</a>	Dimensional metrology
DIMETALIS CROMAG	<a href="http://www.dimetalis.com.br">www.dimetalis.com.br</a>	Chrome plating
GREFORTEC	<a href="http://www.grefortec.com.br">www.grefortec.com.br</a>	Thermal treatments
H.DORF INDUSTRIAL	<a href="http://www.hdorf.com.br">www.hdorf.com.br</a>	Machining
LAJESINOS	<a href="http://www.lajesinos.com.br">www.lajesinos.com.br</a>	Systems and structures
LR METALÚRGICA	<a href="mailto:irmetal@bol.com.br">irmetal@bol.com.br</a>	Machining, matrixes, cuts
MARIO LÓPEZ	<a href="mailto:lopezmario@ig.com.br">lopezmario@ig.com.br</a>	Fiberglass - parts and artifacts
PORTOSUL	<a href="http://www.portosulcomercial.com.br">www.portosulcomercial.com.br</a>	Commercial steels
PROMETAL	<a href="http://www.prometaltda.com.br/">www.prometaltda.com.br/</a>	Precision machining
REFORMÁQUINAS	<a href="http://www.reformaquinas.com.br">www.reformaquinas.com.br</a>	Rubber machinery maintenance
RIJEZA	<a href="http://www.rijeza.com.br">www.rijeza.com.br</a>	Metalization and HVOF coating
SYS	<a href="http://www.sysaut.com.br">www.sysaut.com.br</a>	Automation and instrumentation

<b>ENGINEERING</b>		
<b>COMPANY</b>	<b>SITE</b>	<b>MAIN PRODUCTS</b>
ATD	<a href="http://www.atdengeconstrucoes.com.br">www.atdengeconstrucoes.com.br</a>	Engineering and construction
BIO	<a href="http://www.bioengenharia.com">www.bioengenharia.com</a>	Engineering and industry of implants
CERTO	<a href="http://www.certo.eng.br">www.certo.eng.br</a>	Mechanical Engineer
CRESCER	<a href="http://www.sitecznazario.wix.com/crescer">www.sitecznazario.wix.com/crescer</a>	Automation and control
PEC	<a href="http://www.pec-eng.com.br">www.pec-eng.com.br</a>	Engineering and consulting
JL	<a href="http://www.projetos.bravehost.com">www.projetos.bravehost.com</a>	Civil engineering and projects
VETOR	<a href="http://www.vetor.eng.br">www.vetor.eng.br</a>	Civil engineering

<b>CONSULTING SERVICES</b>		
<b>COMPANY</b>	<b>SITE</b>	<b>MAIN PRODUCTS</b>
ALI	<a href="http://www.alirs.com.br">www.alirs.com.br</a>	Consulting services in developing innovations.
BEAK	<a href="http://www.beak.com.br">www.beak.com.br</a>	Trade consulting services
CERTO	<a href="http://www.certo.eng.br">www.certo.eng.br</a>	Mechanical Engineer
CLERIO OSMAR DE SOUZA	<a href="http://www.cleriosouza.com.br">www.cleriosouza.com.br</a>	Real estate consulting services
GRUPO MENTHOR	<a href="http://www.grupomenthor.com.br">www.grupomenthor.com.br</a>	Consulting services and training
INCLUSION	<a href="http://www.inclusion.com.br">www.inclusion.com.br</a>	Consulting services
ISO AMBIENTAL	<a href="http://www.isoambiental.net">www.isoambiental.net</a>	Environmental solutions
JACOBY	<a href="http://www.jacobycontabilidade.com.br">www.jacobycontabilidade.com.br</a>	Accounting, consulting services.
METAL SYSTEM	<a href="http://www.metalsystem.com.br">www.metalsystem.com.br</a>	Business management solution
SOUTH KONSULT	<a href="http://www.southkonsult.com.br">www.southkonsult.com.br</a>	Business consulting services
TELL VALE	<a href="http://www.tellvale.com.br">www.tellvale.com.br</a>	Advice and consultancy in

VIA MARKETING	<a href="http://www.viamarketing.com.br">www.viamarketing.com.br</a>	telecommunications Advisor, marketing and planning
---------------	--	---

<b>PUBLISHERS AND PRINTERS</b>		
<b>COMPANY</b>	<b>SITE</b>	<b>MAIN PRODUCTS</b>
A1 DIGITAL CENTER	<a href="http://www.a1digitalcenter.net">www.a1digitalcenter.net</a>	Copies, bookbinders and lamination.
EDITORA SINODAL	<a href="http://www.editorasinodal.com.br">www.editorasinodal.com.br</a>	Books, magazines, course material
EDITORA UNISINOS	<a href="http://www.edunisos.com.br">www.edunisos.com.br</a>	Books, magazines, course material
ESTAÇÃO GRÁFICA	<a href="http://www.estacaograficasl.com.br">www.estacaograficasl.com.br</a>	Books, magazines, advertising material
GRÁFICA MARX	<a href="http://www.graficamarx.com.br">www.graficamarx.com.br</a>	Tags, folders, bags
GRÁFICA ART LASER (ex-Palloti)	<a href="http://www.pallotti.com.br/gráfica">www.pallotti.com.br/gráfica</a>	Books, magazines, advertising material
IMPRESSOS PORTÃO	<a href="http://www.impresosportao.com.br">www.impresosportao.com.br</a>	Printing and finishing
ROTERMUND	<a href="http://www.rotermund.com.br">www.rotermund.com.br</a>	Books, magazines, advertising material

<b>PRESS</b>		
<b>COMPANY</b>	<b>SITE</b>	<b>MAIN PRODUCTS</b>
ACONTECE	<a href="mailto:jacontece@pop.com.br">jacontece@pop.com.br</a>	newspaper
CARTA CAPILÉ	<a href="http://www.agenciacarta.com.br/">http://www.agenciacarta.com.br/</a>	Bimonthly Magazine
FEITORIA FM 87.9	<a href="mailto:radiofeitoriafm@ibest.com.br">radiofeitoriafm@ibest.com.br</a>	Radio
JORNAL VS	<a href="http://www.jornalvs.com.br">www.jornalvs.com.br</a>	Jornaldiário
MUNDOESPORTIVO	<a href="http://www.revistamundoesportivo.com.br">www.revistamundoesportivo.com.br</a>	Monthly publication.
NEWS	<a href="http://www.revistanews.com.br/">http://www.revistanews.com.br/</a>	Monthly magazine.
NOVOLHAR	<a href="http://www.novolhar.com.br">www.novolhar.com.br</a>	Bimonthly publication
O IMIGRANTE	<a href="mailto:imigrant@pop.com.br">imigrant@pop.com.br</a>	newspaper
O NOTICIÁRIO	<a href="mailto:jornalnoticiario@pop.com.br">jornalnoticiario@pop.com.br</a>	newspaper
POIS É	<a href="mailto:makbo@akbo.com.br">makbo@akbo.com.br</a>	newspaper
RÁDIO PROGRESSO	<a href="mailto:radioprogresso@redetche.com.br">radioprogresso@redetche.com.br</a>	Radio
TV UNISINOS	<a href="http://www.tvunisos.com.br">www.tvunisos.com.br</a>	Television: regional channel
UNISINOS FM		Radio

<b>PRIVATE EDUCATION</b>		
<b>COMPANY</b>	<b>SITE</b>	<b>MAIN PRODUCTS</b>
CENSUPEG	<a href="http://www.censupeg.com.br">www.censupeg.com.br</a>	Research Center, Extension, Post-graduation.
Esc.Enfermagem Paz	<a href="http://www.escoladapaz.com.br">www.escoladapaz.com.br</a>	Nursing, surgical education,
EST–Esc.Sup.Teologia	<a href="http://www.est.edu.br/">www.est.edu.br/</a>	Undergraduate, master's, graduate.
ITAPUY	<a href="http://www.itapuy.org.br">www.itapuy.org.br</a>	Education for local development
UNISINOS	<a href="http://www.unisos.com.br">www.unisos.com.br</a>	Higher Education, Masters degree, PhD, MBA

<b>HUMAN RESOURCES</b>		
<b>COMPANY</b>	<b>SITE</b>	<b>MAIN PRODUCTS</b>
CIEE – RS	<a href="http://www.ciee-rs.org.br">www.ciee-rs.org.br</a>	Training agency
CONFLUÊNCIA	<a href="http://www.confluencia.com.br">www.confluencia.com.br</a>	Business relations
HIDI	<a href="http://www.hidi.org.br">www.hidi.org.br</a>	Human development and integration
PROSERVI	<a href="http://www.proservirs.com.br">www.proservirs.com.br</a>	Consultancy and personnel selection

<b>REAL ESTATE</b>	
<b>COMPANY</b>	<b>SITE</b>
AG3 IMÓVEIS	<a href="http://www.ag3imoveis.com.br">www.ag3imoveis.com.br</a>
AMIL IMÓVEIS	<a href="http://www.amilimoveis.com.br">www.amilimoveis.com.br</a>
AUXILIADORA PREDIAL	<a href="http://www.auxiliadorapredial.com.br">www.auxiliadorapredial.com.br</a>
BOLSAVAL	<a href="http://www.bolsaval.com.br">www.bolsaval.com.br</a>
CORTINAZ	<a href="http://www.cortinazimoveis.com.br">www.cortinazimoveis.com.br</a>
DUPLO ESSE	<a href="http://www.duploesseimoveis.com">www.duploesseimoveis.com</a>
ÊXITO IMÓVEIS	<a href="http://www.exitoimoveirs.com.br">www.exitoimoveirs.com.br</a>
IMOBILIÁRIA	<a href="http://www.imobiliariapanitz.com.br">www.imobiliariapanitz.com.br</a>
IMOBILIÁRIA JET	<a href="http://www.jetimobiliaria.com.br">www.jetimobiliaria.com.br</a>
IMOBILIÁRIA ROSSI	<a href="http://www.imobiliariarossi-rs.com.br">www.imobiliariarossi-rs.com.br</a>
J.KROTH IMÓVEIS	<a href="http://www.jkrothimoveis.com">www.jkrothimoveis.com</a>
JUSTO	<a href="http://www.justoimoveis.com.br">www.justoimoveis.com.br</a>
MAXXI IMÓVEIS	<a href="http://www.imobiliariamaxxi.com.br">www.imobiliariamaxxi.com.br</a>
MORADA IMÓVEIS	<a href="http://www.moradaimoveis-rs.com">www.moradaimoveis-rs.com</a>
SOLAR	<a href="http://www.imobiliariasolar.net">www.imobiliariasolar.net</a>
TERRAPLAN IMÓVEIS	<a href="http://www.terraplanimoveis.com.br">www.terraplanimoveis.com.br</a>
VALE IMÓVEIS	<a href="http://www.valeimoveis.com.br">www.valeimoveis.com.br</a>
VILA RICA	<a href="http://www.vilarica.com.br">www.vilarica.com.br</a>
VOGEL IMÓVEIS	<a href="http://www.vogelimoveis.com.br">www.vogelimoveis.com.br</a>

<b>HEALTH INSURANCE</b>	
<b>COMPANY</b>	<b>SITE</b>
CENTRO CLÍNICO GAÚCHO	<a href="http://www.centroclinicogaucho.com.br/view_unidades.php?id=8">www.centroclinicogaucho.com.br/view_unidades.php?id=8</a>
MULTICLÍNICA	<a href="http://www.multiclinica.com.br">www.multiclinica.com.br</a>
ULBRA SAÚDE	<a href="http://www.ulbra.br/cms/">www.ulbra.br/cms/</a>
UNIMED VALE DO SINOS	<a href="http://www.unimed.com.br/pct/index.jsp?cd_canal=52536">www.unimed.com.br/pct/index.jsp?cd_canal=52536</a>

<b>TOURISM</b>	
<b>COMPANY</b>	<b>SITE</b>
ARQUIPELAGO	<a href="http://www.arquipelagoviagens.com.br/ghiu/default.asp?agt">www.arquipelagoviagens.com.br/ghiu/default.asp?agt</a>
FLY TOUR	<a href="http://www.flytour.com.br">www.flytour.com.br</a>
MENEGON TURISMO	<a href="http://www.menegonturismo.com.br/">www.menegonturismo.com.br/</a>
PARALELO 30	<a href="http://www.paralelo30turismo.com.br/">www.paralelo30turismo.com.br/</a>
ZUME TRAVEL	<a href="http://www.zumetravel.com.br/">www.zumetravel.com.br/</a>

## 2.4 INFORMATION AND COMMUNICATION TECHNOLOGY – ICT

COMPANIES IN TECNOSINOS	
COMPANY	SITE
3P PROJETOS	<a href="http://www.3pprojetos.com.br">www.3pprojetos.com.br</a>
ACERRA	<a href="http://www.accera.com.br">www.accera.com.br</a>
ALTUS	<a href="http://www.altus.com.br">www.altus.com.br</a>
AMBIENTALLE	<a href="http://www.ambientalleengenharia.com.br">www.ambientalleengenharia.com.br</a>
ANTECIPADO.COM	<a href="http://www.anticipado.com">www.anticipado.com</a>
AVACON	<a href="http://www.avacon.com.br">www.avacon.com.br</a>
BLUECIELO	<a href="http://www.bluecieloecm.com">www.bluecieloecm.com</a>
BOSCH REXROTH	<a href="http://www.boschrexroth.com">www.boschrexroth.com</a>
BRTRI	<a href="http://www.brtri.com">www.brtri.com</a>
CENTRI	<a href="http://www.centri.inf.br">www.centri.inf.br</a>
CODEO	
CONTATOMS	<a href="http://www.contatoms.com">www.contatoms.com</a>
CONTROL_AGRO_BIO	<a href="http://controlagrobio.wix.com/cab">controlagrobio.wix.com/cab</a>
CWI	<a href="http://www.cwi.com.br">www.cwi.com.br</a>
DEFENDA	<a href="http://www.defenda.com.br">www.defenda.com.br</a>
DIGISTAR	<a href="http://www.digistar.com.br">www.digistar.com.br</a>
DISYS	<a href="http://www.disys.com.br">www.disys.com.br</a>
ELY PROJETS	<a href="http://www.elyprojetos.com.br">www.elyprojetos.com.br</a>
E-PROJETI	<a href="http://www.e-projeti.com.br">www.e-projeti.com.br</a>
E-STORAGE	<a href="http://www.e-storageonline.com.br">www.e-storageonline.com.br</a>
F1 SOLUÇÕES	<a href="http://www.f1solucoes.com.br">www.f1solucoes.com.br</a>
FOCCO	<a href="http://www.focco.com.br">www.focco.com.br</a>
GABSTER	<a href="http://www.gabster.com.br">www.gabster.com.br</a>
GETNET	<a href="http://www.getnet.com.br">www.getnet.com.br</a>
GVDASA	<a href="http://www.gvdasa.com.br">www.gvdasa.com.br</a>
HCL	<a href="http://www.hcltech.com">www.hcltech.com</a>
HT MICRON	<a href="http://www.htmicron.com.br">www.htmicron.com.br</a>
HYUNDAI	<a href="http://www.hyundai.com.br">www.hyundai.com.br</a>
IC TEC	<a href="http://www.teleconsistemas.com.br">www.teleconsistemas.com.br</a>
IMPRESS-RS	<a href="http://www.impress-rs.com.br">www.impress-rs.com.br</a>
KYOODAI	<a href="http://www.kyoodai.art.br">www.kyoodai.art.br</a>
KYRYON	<a href="http://www.tecnosinos.com.br/index.php/especialidades/tecnologia-da-informacao/161-kyron-consulting">www.tecnosinos.com.br/index.php/especialidades/tecnologia-da-informacao/161-kyron-consulting</a>
LINGLDO BRASIL	<a href="http://www.lingl.com.br">www.lingl.com.br</a>
LUNG	<a href="http://www.lung.com.br">www.lung.com.br</a>
LYDIANS	<a href="http://www.lydians.com.br">www.lydians.com.br</a>
M3CORP	<a href="http://www.m3corp.com.br">www.m3corp.com.br</a>
MARTENS	<a href="http://www.polisolutions.net">www.polisolutions.net</a>
MEDIDA SAÚDE	<a href="http://www.medidasaude.com.br">www.medidasaude.com.br</a>
META	<a href="http://www.meta.com.br">www.meta.com.br</a>
MIND MOBI	<a href="http://www.mindmobi.com.br">www.mindmobi.com.br</a>
MURA STUDIO	<a href="http://www.murastudio.com/">www.murastudio.com/</a>
NATUROILS	<a href="http://www.naturoils.com.br">www.naturoils.com.br</a>
NC SYSTEMS	<a href="http://www.ncsystems.com.br">www.ncsystems.com.br</a>
NETEYE	<a href="http://www.neteye.com.br">www.neteye.com.br</a>

ÓBILE	<a href="http://www.obile.com.br">www.obile.com.br</a>
OMEGA DO BRASIL	<a href="mailto:bull@bull.adv.br">bull@bull.adv.br</a>
POLIS	<a href="http://www.polisead.com.br">www.polisead.com.br</a>
POLIS TECNOLOGIA	<a href="http://www.polistecnologia.com.br">www.polistecnologia.com.br</a>
RB	<a href="http://www.rochabado.com.br">www.rochabado.com.br</a>
REDE INDUSTRIAL	<a href="http://www.centrsigma.com.br">www.centrsigma.com.br</a>
RLINE	<a href="http://www.rlinebrasil.com.br">www.rlinebrasil.com.br</a>
SAP	<a href="http://www.sap.com.br">www.sap.com.br</a>
SAWLUZ	<a href="http://www.sawluz.com.br">www.sawluz.com.br</a>
SBPA	<a href="http://www.flysbpa.com.br">www.flysbpa.com.br</a>
SKA	<a href="http://www.ska.com.br">www.ska.com.br</a>
SMARTRONIC	<a href="http://www.smartronic.com.br">www.smartronic.com.br</a>
SOFTTEK	<a href="http://www.softtek.com">www.softtek.com</a>
STEFANINI	<a href="http://www.stefanini.com.br">www.stefanini.com.br</a>
TECSISTEL	<a href="http://www.tecsistel.com.br">www.tecsistel.com.br</a>
VENTURA	<a href="mailto:venturagestaoambiental@gmail.com">venturagestaoambiental@gmail.com</a>
VEZA	<a href="http://www.veza.com.br">www.veza.com.br</a>
VIEIRA FILHO	<a href="http://www.vieirafilho.ind.br">www.vieirafilho.ind.br</a>
W3K	<a href="http://www.w3ktech.com.br">www.w3ktech.com.br</a>
WORKROOM	<a href="http://www.workroom.com.br">www.workroom.com.br</a>

COMPANIES OUTSIDE TECNOSINOS	
AIRWIRE	<a href="http://www.airwire.com.br">www.airwire.com.br</a>
ALVO TI	<a href="http://www.alvoti.com">www.alvoti.com</a>
CONFLUÊNCIA	<a href="http://www.confluencia.com.br">www.confluencia.com.br</a>
DEZINFO	<a href="http://www.dezinfo.com.br">www.dezinfo.com.br</a>
GEO	<a href="http://www.gemtechnology.com.br">www.gemtechnology.com.br</a>
Multitel Comunicações LTDA	
PEC	<a href="http://www.pec-eng.com.br">www.pec-eng.com.br</a>
PONFAC	<a href="http://www.ponfac.com.br">www.ponfac.com.br</a>
PONTOCOM	<a href="http://www.pontocom.info">www.pontocom.info</a>
RMS	<a href="http://www.rmstecnologia.com.br">www.rmstecnologia.com.br</a>
TECHNOMASTER	<a href="http://www.technomaster.com.br">www.technomaster.com.br</a>
TI SUL	<a href="http://www.tisul.com.br">www.tisul.com.br</a>
TVN	<a href="http://www.tvn.com.br">www.tvn.com.br</a>
VIRTUAL	
VISO NET	<a href="http://www.visonet.net">www.visonet.net</a>
VISUS	<a href="http://www.visus.ind.br">www.visus.ind.br</a>

### 3. EMPLOYERS' ASSOCIATIONS AND TRADE UNIONS

ASSOCIATIONS		
ASSOCIATION	SITE	DESCRIPTION
ABO	<a href="http://www.abosinos.com.br/">http://www.abosinos.com.br/</a>	Association Dentistry Association
ACIST	<a href="http://www.acissl.com">www.acissl.com</a>	Commercial, industrial, services, tech
AEA	<a href="http://www.aeasinos.terra.com">www.aeasinos.terra.com</a>	Association of engineers and

	<a href="http://br">br</a>	Architects Vale dos Sinos
AFM/SL	<a href="mailto:afmsl@terra.com.br">afmsl@terra.com.br</a>	Association of Municipal employees
ASSESPRO	<a href="http://www.assespro-rs.org.br">www.assespro-rs.org.br</a>	Informatics
Association CEEE employees	<a href="mailto:afceeesl@terra.com.br">afceeesl@terra.com.br</a>	Association CEEE employees
Association of Doctors from SL	<a href="http://www.amedicasl.com.br">www.amedicasl.com.br</a>	Association of Doctors from São Leopoldo
Association of Federal Road Police	<a href="http://www.apprfs.com.br">www.apprfs.com.br</a>	Association of Federal Road Police
Association of SEMAE	<a href="mailto:associacaofsemae@terra.com.br">associacaofsemae@terra.com.br</a>	Association SEMAE
ATAPEN/SL	<a href="mailto:atapensl@terra.com.br">atapensl@terra.com.br</a>	Association of retired workers and pensioners
CDL	<a href="http://www.cdl-sl.com.br">www.cdl-sl.com.br</a>	Retail Board of Directors
Computer science complex	<a href="http://www.polodeinformatica.com.br">www.polodeinformatica.com.br</a>	Board of the computer science complex
COOPBRAS	<a href="http://www.cbtr.com.br">www.cbtr.com.br</a>	Labor and income cooperative
CREA/RS	<a href="http://www.crea-rs.org.br/">www.crea-rs.org.br/</a>	Regional Board of Engineering, Architecture and Agronomy
CRECI/RS	<a href="http://www.creci-rs.gov.br/">www.creci-rs.gov.br/</a>	Regional Board of Realtors RS
RURAL UNION	<a href="mailto:sindruralsl@uol.com.br">sindruralsl@uol.com.br</a>	Rural Union
SETUP	<a href="mailto:seteonibus@terra.com.br">seteonibus@terra.com.br</a>	Public transportation trade union
SINBORSUL	<a href="http://www.sinborsul.com.br">www.sinborsul.com.br</a>	Industrial Union of rubber products
SINDARTCOURO	<a href="mailto:sindartcouro@bol.com.br">sindartcouro@bol.com.br</a>	Industrial Union ArtefatosCouro
SINDILOJAS	<a href="http://www.sindileo.com.br">www.sindileo.com.br</a>	Retail syndicate
SINDIMETAL	<a href="http://www.sindimetalsr.org.br">www.sindimetalsr.org.br</a>	Industry Union, Metallurgical, mechanical electrical and
SINDIVEST	<a href="mailto:sindivestsl@bol.com.br">sindivestsl@bol.com.br</a>	Industrial clothing union
SINDUSCON	<a href="http://www.sinduscon.com.br">www.sinduscon.com.br</a>	Industrial Union Construction and furniture

### 3.1 WORKER'S UNIONS

UNIONS	SITE
Accountants	<a href="mailto:sindicato@sincontecsinos.org.br">sindicato@sincontecsinos.org.br</a>
Bankers	<a href="mailto:sindbanco@terra.com.br">sindbanco@terra.com.br</a>
Commercial employee	<a href="mailto:sindicato.sle@terra.com.br">sindicato.sle@terra.com.br</a>
Construction and furniture	<a href="http://www.sinduscom.org.br">www.sinduscom.org.br</a>
Footwear and clothing	<a href="mailto:calcadoevestuario@brturbo.com.br">calcadoevestuario@brturbo.com.br</a>
Graphic Industry from São Leopoldo	<a href="mailto:stigsle@terra.com.br">stigsle@terra.com.br</a>
Journalists	<a href="http://www.jornalistas-rs.org.br">www.jornalistas-rs.org.br</a>
Leather goods	<a href="mailto:stippcsl@yahoo.com.br">stippcsl@yahoo.com.br</a>
Paper, cardboard	<a href="mailto:stippcsl@yahoo.com.br">stippcsl@yahoo.com.br</a>
Private School teachers-	<a href="mailto:saoleo@sinprors.org.br">saoleo@sinprors.org.br</a>
Real Estate Agents	<a href="mailto:gseger@sinos.net">gseger@sinos.net</a>
Road Transport	<a href="mailto:Secretaria_sindisl@terra.com.br">Secretaria_sindisl@terra.com.br</a>
Rubber artifacts	<a href="mailto:stborracha@sinos.net">stborracha@sinos.net</a>
Rubber artifacts	<a href="http://www.sinborsul.com.br">www.sinborsul.com.br</a>

Steelworkers	<a href="mailto:sindimetalsaoleo@terra.com.br">sindimetalsaoleo@terra.com.br</a>
Steelworkers	<a href="http://www.sindimetal-vs.com.br">www.sindimetal-vs.com.br</a>
Surveillance companies	<a href="mailto:sesvisle@ig.com.br">sesvisle@ig.com.br</a>
Teachers	<a href="http://www.sinpro-rs.org.br/">www.sinpro-rs.org.br/</a>
Teachers	<a href="http://www.cpers.org.br">www.cpers.org.br</a>

### 3.2 ENVIRONMENTAL INSTITUTIONS

NAME	SITE	MAIN PRODUCTS
COOPERESÍDUOS	<a href="mailto:cooperesiduoss1@yahoo.com.br">cooperesiduoss1@yahoo.com.br</a>	Solid wastes
FUNRESOLI	<a href="http://www.funresoli.com.br">www.funresoli.com.br</a>	Industrial solid waste
SOLVI	<a href="http://www.solvi.com/sl">www.solvi.com/sl</a>	Solid wastes
UPAN	<a href="http://www.upan.org.br">www.upan.org.br</a>	Natural Environment protective union

## 4. CREDITS:

Secretary of Economic and Technological Development – SEDETEC

Secretary: Olimar Queiroz

Address: Av. Dom João Becker, 754 – ground floor

Telephone: +55 51 3526.5378

Email: [empresarial@saoleopoldo.rs.gov.br](mailto:empresarial@saoleopoldo.rs.gov.br)

Office hours: 9:00 h to 16:00 h

The Municipal Secretariat of Economic and Technological Development is responsible for promoting the industrial and technological development of the municipality, as well as the commercial and service development, giving assistance to small and medium-sized enterprises and to cooperativism.

In addition to supporting the employment policy and the labor market, the secretariat encourages workers training, development, entrepreneurship and cooperation and also aims to attract and encourage commercial and industrial investment and services, develop and support social and solidarity economy projects; deploy support and development of vocational and technological education policies; and offer credit to formal and informal entrepreneurs who are excluded from traditional credit, through the municipal microcredit system.

The Secretariat also licenses and controls temporary trade, public markets and street markets, in addition to issuing license permits for location of all activities of individuals and corporations in development in the municipality and supervising their existence.

Drafted by:

Jorge Kuhn Neto

Technological and Business Development Director

Municipal Economic and Technological Development Secretary

Updates:

January 2016 by Engineer Celso Antonio Schokal and Jorge Kuhn – SEDETEC

Translation from Portuguese: Geane de Azevedo - SECOL

August/oct 2016 by Jorge Kuhn and Engineer Celso Antonio Schokal – SEDETEC

February/april 2017 by Jorge Kuhn– SEDETEC